

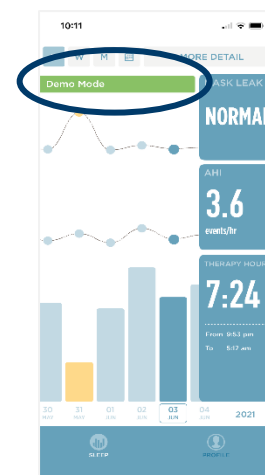
# Activating Demo mode

The **SleepStyle App Demo mode** is a feature designed to allow therapy providers or physicians the ability to demonstrate the App to patients or customers, while discussing the benefits of monitoring therapy.

When 'Demo mode' is activated, the mask leak, AHI and therapy hours charts will show representative (sample) data for all fields. This sleep data automatically renews each day.

When activated, Demo mode is obvious to the user and is highlighted with a bright green indicator bar (see example, right)

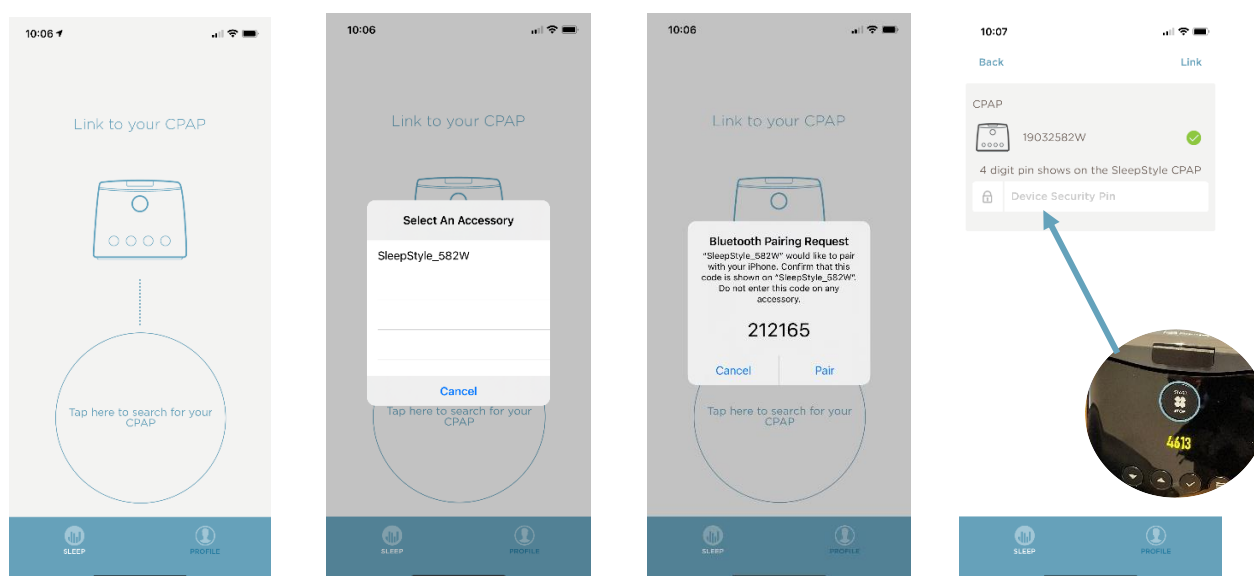
*Please note: Demo mode will not affect the normal function of the app, but does temporarily hide personal data from the user. The app and CPAP will continue to sync data, but the user will not see this new data on their personal data graphs until they turn 'Demo mode' off.*



## STEP 1: CONNECT YOUR SLEEPSTYLE DEVICE AND APP

To be able to use the SleepStyle App in Demo Mode, you will need to first pair your SleepStyle App to a SleepStyle machine. To do this:

1. Download the SleepStyle App via App Store or Google Play
2. Plug in your SleepStyle machine and ensure it is within range of your mobile phone
3. Open your mobile phone settings menu and turn on your Bluetooth
4. Open the SleepStyle App and tap on "Tap here to search for your CPAP".
5. A "Select An Accessory" screen will appear. Tap on your CPAP device's name, which will be displayed on your phone as "SleepStyle\_XXXX". The last 4 digits are your device's serial number.
6. A "Bluetooth Pairing Request" screen will then appear. Confirm the 6-digit code and then tap "Pair".
7. A "Device Security Pin" screen will appear. Enter the 4-digit PIN shown on the screen of your CPAP device, then tap 'Link' in the top right hand corner to pair your SleepStyle machine to your mobile phone.



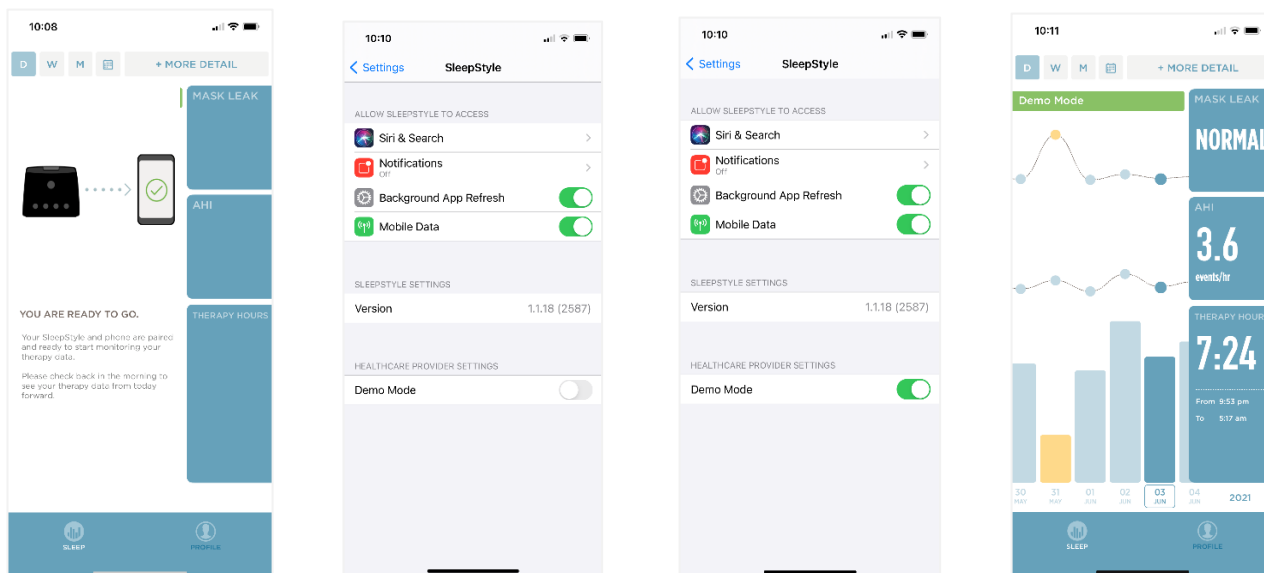
*Note: You only need to pair your SleepStyle machine to your mobile phone once. It will say paired and reconnect automatically.*

## STEP 2: ACTIVATE DEMO MODE FOR YOUR SLEEPSTYLE APP

Activating the SleepStyle App Demo Mode is different in Apple and Android devices, as shown below.

### APPLE DEVICE

1. Go to the iOS 'Settings' from your phone Home screen
2. Select the 'SleepStyle App' option
3. In the SleepStyle App, slide the 'Demo mode' option bar to ON
4. Go back to your Home screen and tap on the SleepStyle App icon. The demo sleep data should now appear on your SleepStyle App



### ANDROID DEVICE

1. Within the SleepStyle App, tap 'Profile' and then the 'Menu' button at the top right.
2. Go to the 'About' page and then tap on 'Provider options'. Slide the 'Demo mode' option bar to ON
3. Go to your Home screen and tap on the SleepStyle App icon. The demo sleep data should now appear on your SleepStyle App

